

# RESEARCHING WELSH HOUSE HISTORIES



Cilgant Maesderwen, Pontypool (2010). DS2010\_286\_001 NPRN 410898



**Comisiwn Brenhinol**  
Henebion Cymru  
**Royal Commission on the Ancient**  
and Historical Monuments of Wales



Noddir gan  
**Lywodraeth Cymru**  
Sponsored by  
**Welsh Government**



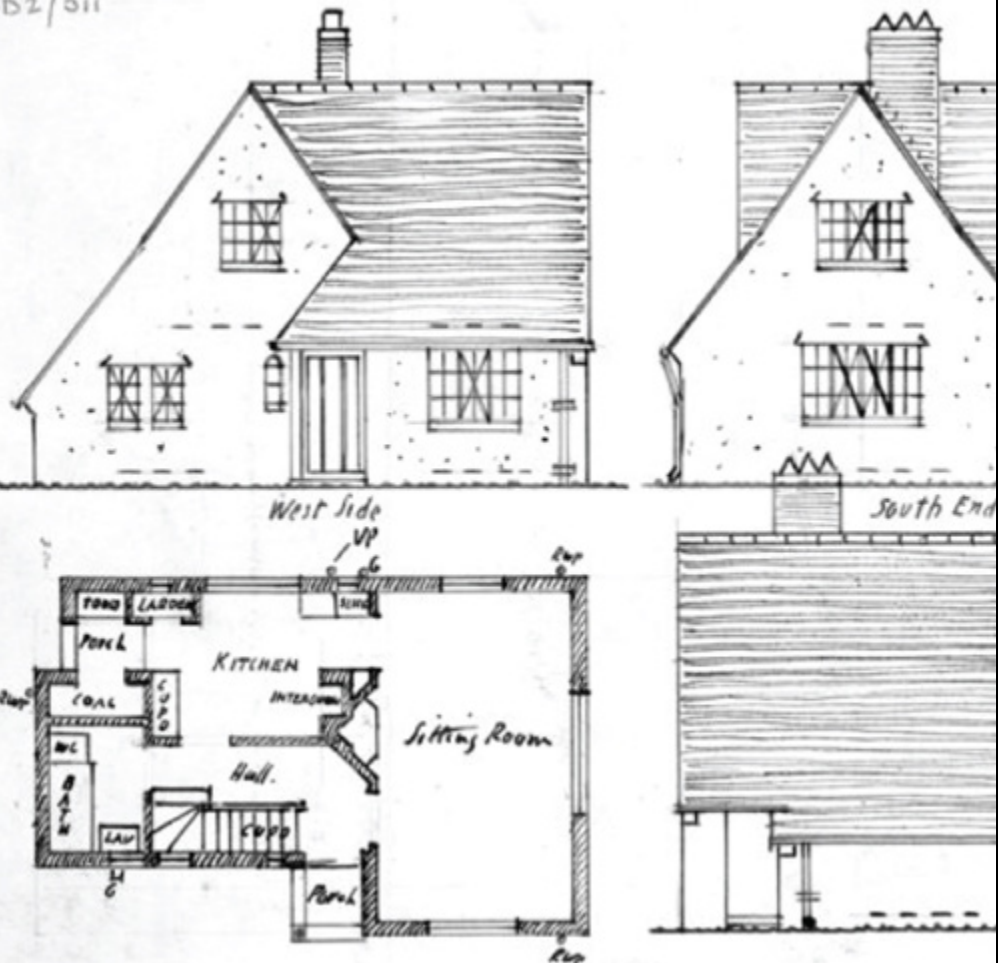
Back Row, Onllwyn: two-storey workers' cottages, now demolished. DI2008\_1332 NPRN 407800

## House history

The National Monuments Record of Wales (NMRW) holds a wealth of information relating to domestic properties, which can help provide historical and contemporary context to the history of your house. Our collections encompass reports, surveys, maps, drawings, photographs, and aerial photographs, relating to all aspects of the built environment. We are also home to a specialist library, with many varied publications relating to the history of buildings across Wales.

If your house was formerly a chapel, a school, a pub, a mill, a lighthouse, or a commercial or industrial property, we may well have material relating to it in our collections.

Discovering our past online:  
[www.coflein.gov.uk](http://www.coflein.gov.uk)



## Collections

- Drawings, architectural plans, site surveys and high-quality reconstruction drawings are an excellent resource for architectural detail.
- Images (photographs and postcards) can provide a wealth of background, contextual, and sometimes distinctly individual, information on the history of your property. Our collections hold both interior and exterior photographs showing how these properties have changed over the decades.
- Use our large collection of Ordnance Survey maps to locate buildings, ascertain land and field boundaries and see how these may have altered over time.
- The collections of Estate Plans and Sales Particulars can provide fascinating building descriptions and information on associated land holdings and usage.
- Aerial photographs can be used to locate your property within its wider context. We hold large collections of aerial photographs, ranging in date from 1918 to the present day. Check to see if your house is covered.



The NMRW also holds descriptive accounts of individual properties, including:

- Survey reports
- Historical accounts
- Newspaper cuttings
- Notes
- Watching briefs
- Cadw Listed Buildings

Our small but extensive collection of specialist library books, journals, and pamphlets can also help to provide contextual and specific architectural, historical, economic and social details. The historic county inventories published by RCAHMW can be a useful starting point. Other, more specific publications include those on farmhouses, cottages, chapels, mills, and industrial properties.



## Services

Use *Coflein*, our online database, to search for sites of interest, check our catalogued collections, and view images from across Wales – [www.coflein.gov.uk](http://www.coflein.gov.uk)

Visit our library and search room to view books and original archive material from the NMRW. We are open Monday – Friday 09.30 – 16.00, Wednesday 10.30 – 16.30. An appointment is advisable.



**NMRW Library and Enquiries Service**  
RCAHMW  
Penglais Road  
Aberystwyth  
Ceredigion, SY23 3BU

**Telephone:** +44 (0)1970 621200

**E-mail:** [nmr.wales@rcahmw.gov.uk](mailto:nmr.wales@rcahmw.gov.uk)

**Website:** [www.rcahmw.gov.uk](http://www.rcahmw.gov.uk)

**Our online record of sites and online catalogue:**

**Coflein:** [www.coflein.gov.uk](http://www.coflein.gov.uk)