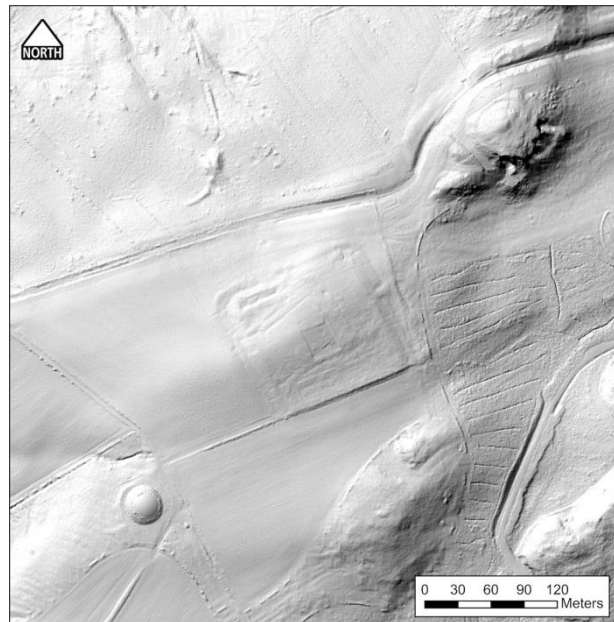


Hidden Landscape of a Roman Frontier Project

Nick Hannon (BA, MSc): [Canterbury Christ Church University](#)

The Hidden Landscape of a Roman Frontier project focuses on the landscape archaeology, history and heritage management of the Antonine Wall, a UNESCO World Heritage site in central Scotland. The project's primary dataset consists of LiDAR data covering the extent of the World Heritage Site.



The paper argues that through the careful use of the measurements contained within LiDAR data rather than through its visualisation, new answers to existing archaeological questions can be obtained. Through study of the beautifully inscribed distance slabs it will demonstrate that the *pes Drusianus* was used as the standard measurement for the construction of the Wall. The confirmation that the distances inscribed on the slabs are accurate and the inscriptions account for not only the occurrence of the primary, but also the secondary installations, brings into question the Gillam hypothesis that has underpinned Antonine Wall studies for the past 40 years.

